

Horpestad Pasture

North of Lavina, MT



For additional details, contact:



Tim Nesson

Broker

Member—Nesson & Associates Realty

P.O. Box 51467

Billings, MT 59105

Cell: (406) 860-0791

E-mail: tim@montanafarmranch.com

Website: montanafarmranch.com

Horpestad Pasture

Purchase Price: \$4,500,000



DESCRIPTION

6252 ACRES ALL IN ONE BLOCK OF CLEAN NATIVE GRASSES, SEVERAL RESERVOIRS, WELL AND WATERING SYSTEM WITH STORAGE TANK. ALSO INCLUDES HOLDING PEN AND SET OF CORRALS FOR PROCESSING ON NORTH END OF PROPERTY. WELL MAINTANED PERIMETER AND CROSS FENCES

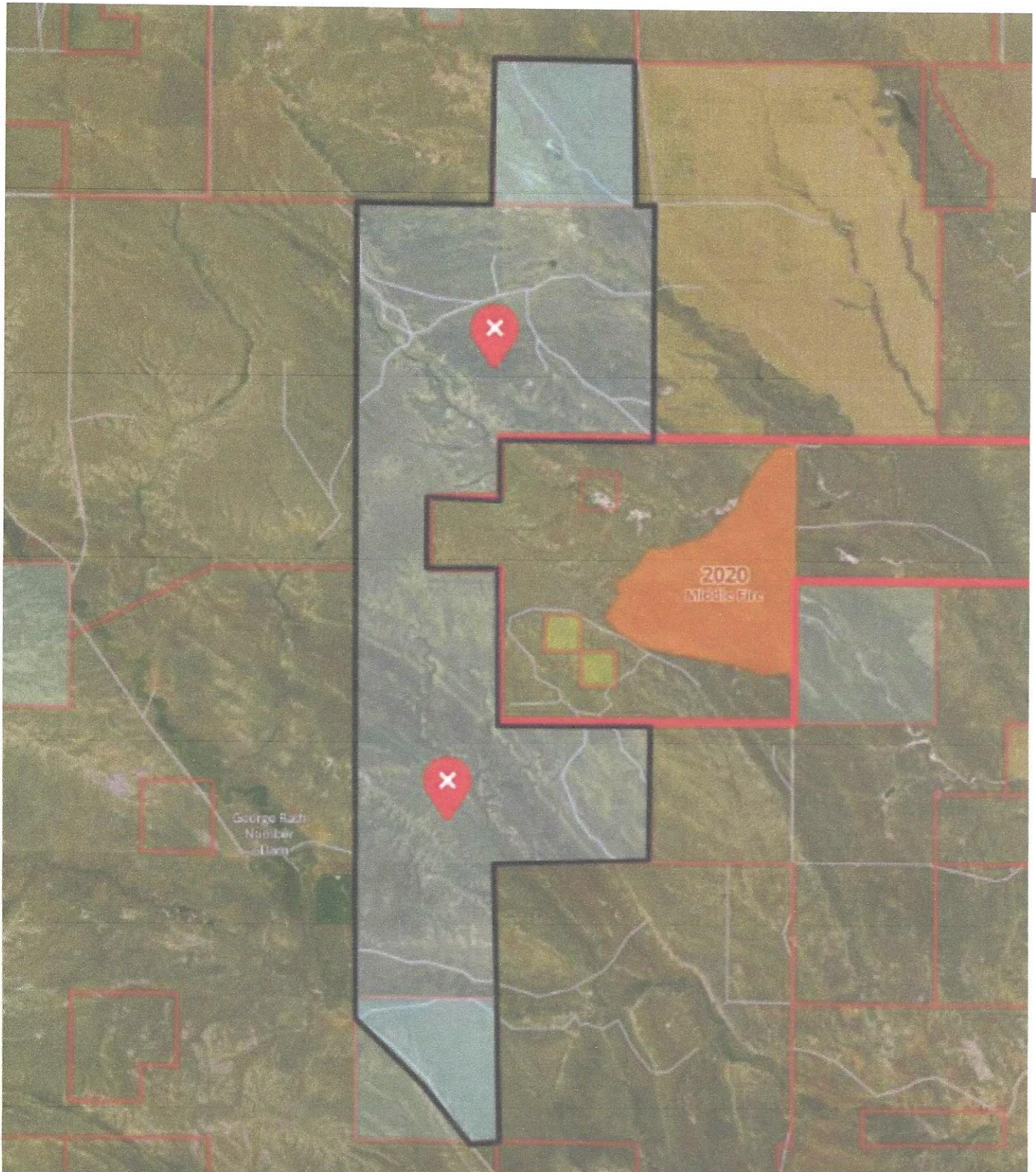
PROPERTY IS COMPRISED OF 5225 M/L DEEDED ACRES

1027 M/L LEASED ACRES (2 STATE LEASES ONE EXPIRES FEB. 2027 ONE EXPIRES FEB. 2029)

Horpestad Pasture

North of Lavina, MT





NOTICE: The information contained herein has been supplied by the owner to **LANDMARK REALTORS** and/or compiled by **LANDMARK REALTORS** from other sources believed to be reliable. All information contained herein is not guaranteed to be accurate, and the reader of this brochure should independently verify all such information, particularly the number of acres involved, the classifications of those acres, carrying capacity, estimate of production yields, water rights, etc.

