

# 355 Floweree Rd. N.

Floweree, MT  
Chouteau County



For additional details, contact:



**Tim Nesson**  
Broker

Member—Nesson & Associates Realty  
P.O. Box 51467  
Billings, MT 59105

Cell: (406) 860-0791  
E-mail: [tim@montanafarmranch.com](mailto:tim@montanafarmranch.com)  
Website: [montanafarmranch.com](http://montanafarmranch.com)

# 355 Floweree Rd. N. Property

**Purchase Price: \$55,000**



## DESCRIPTION

Suitable property for someone looking for a place to store RV, boat, vehicles, and anything else you are wanting to keep out of the weather! Plus, the ability to make use of the additional acreage.

- **7.5 +/- acres** just off Hwy. 87 between Great Falls and Ft. Benton
  - 2+ acres tilled and the remaining acres grass
- One **Steel Building** with concrete floor and est. 12' x 14' roll up door
- Small Grain Bin and several Wood Frame Structures
- No utilities available
- Water may be available (subject to Carter Chouteau County Water Board approval)
- Taxes: \$336/year
- **Directions:** 21 miles NE of Great Falls on Hwy. 87, North on Floweree Rd. N. Go approximately 0.1 mile—property will be on west side of road.



# 355 Floweree Rd. N. Property







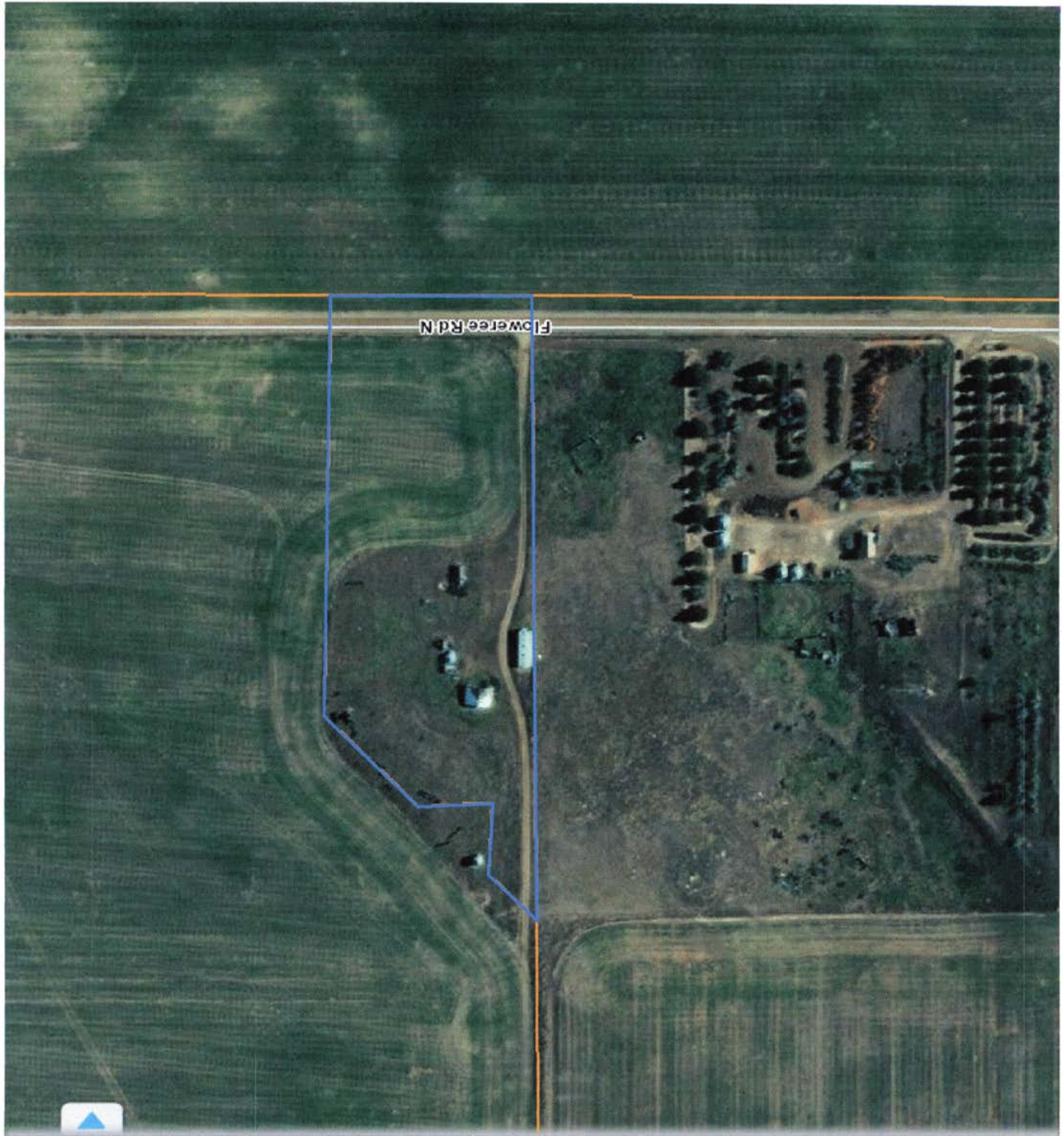
23N 6E

Flower Rd N

12

23N 5E





**NOTICE:** The information contained herein has been supplied by the owner to **NESSAN & ASSOCIATES REALTY** and/or compiled by **NESSAN & ASSOCIATES REALTY** from other sources believed to be reliable. All information contained herein is not guaranteed to be accurate, and the reader of this brochure should independently verify all such information, particularly the number of acres involved, the classifications of those acres, carrying capacity, estimates of production yields, water rights, etc.