

Chouteau Co. Farmstead



For additional details, contact:

Tim Nesson

Broker

Member—Nesson & Associates Realty

P.O. Box 51467

Billings, MT 59105

Cell: (406) 860-0791

E-mail: tim@montanafarmranch.com

Website: montanafarmranch.com

Chouteau Co. Farmstead

Purchase Price: \$425,000



DESCRIPTION—MUST SEE!!

- 23 +/- acres located in Chouteau County near Carter, MT.
- Improvements consist of:
 - Residential Home: Built in 1952, 1,536 sq. ft. on the first level with 3 bedrooms and 1 full bath, 1,263 sq. ft. partially finished basement with 2 bedrooms, new roof and gutters.
 - 2 Car Garage (detached): 24' x 24'
 - Quonset: 36' x 100'
 - Grain bins (estimated 33,000-bushel capacity)
 - 1 Steel Bin: 1,000 bu.
 - 5 Steel Bins: 3,300 bu./bin
 - 2 Steel Bins: 2,700 bu./bin
 - 1 Steel Bin: 4,400 bu.
 - 1 Steel Bins: 5,900 bu./bin
 - Shop: 20' x 24'
- In the Carter Chouteau Co. Water Dist.
- High speed internet.
- Septic system (new in 2017).
- Est. Taxes: \$1,223
- Elevation: 3,210'
- Security cameras in use.

Chouteau Co. Farmstead

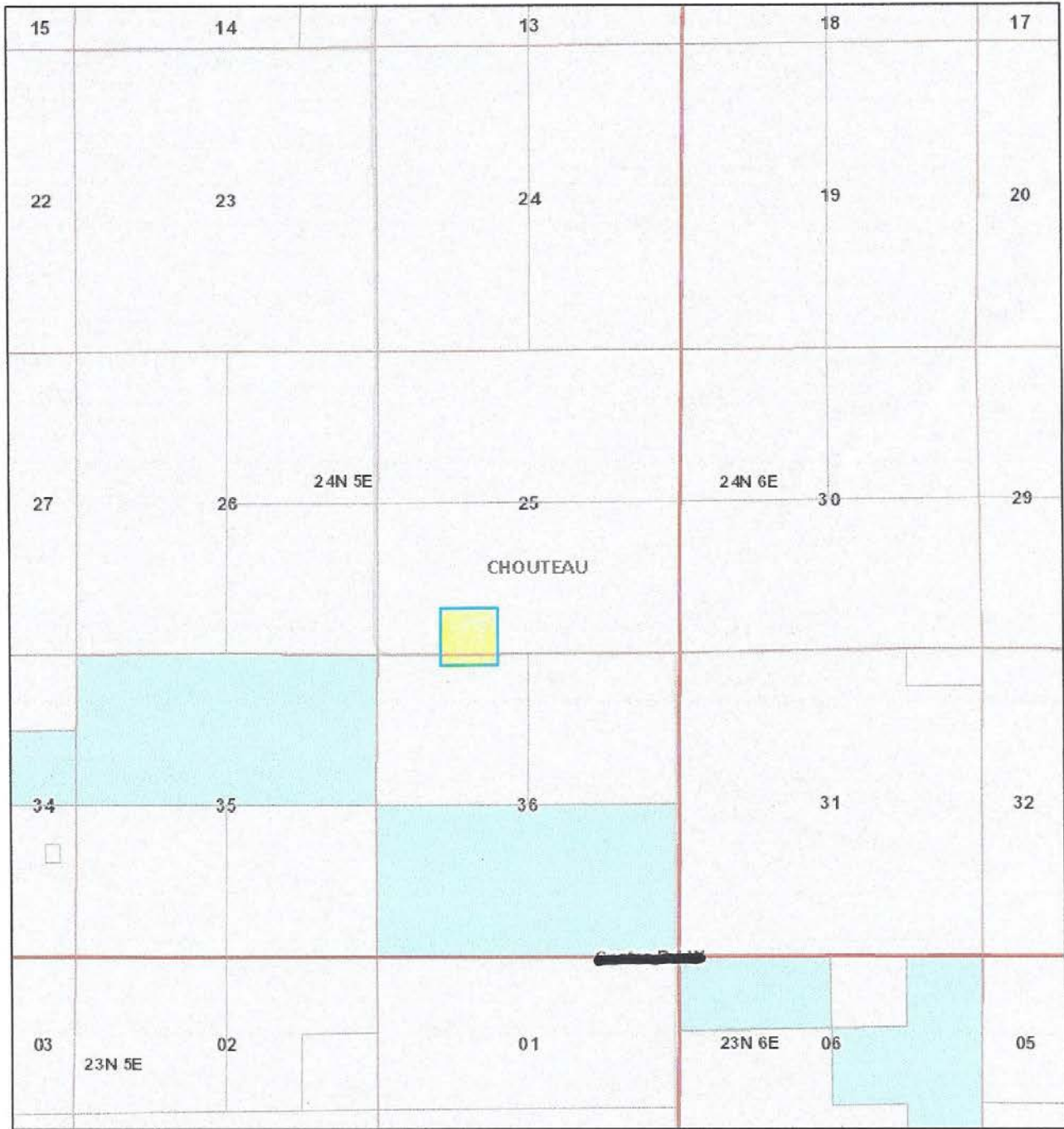
23 +/- Acres




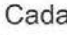



Chouteau Co. Farmstead

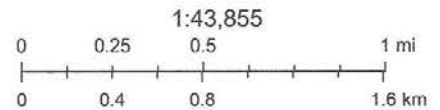


Montana Cadastral Map



9/24/2020, 6:11:20 AM

-  CadastralWebMerc - OwnerParcel
-  CadastralWebMerc - PLSS First Division
-  Section
-  CadastralWebMerc - PLSS Township
-  CadastralWebMerc - Counties

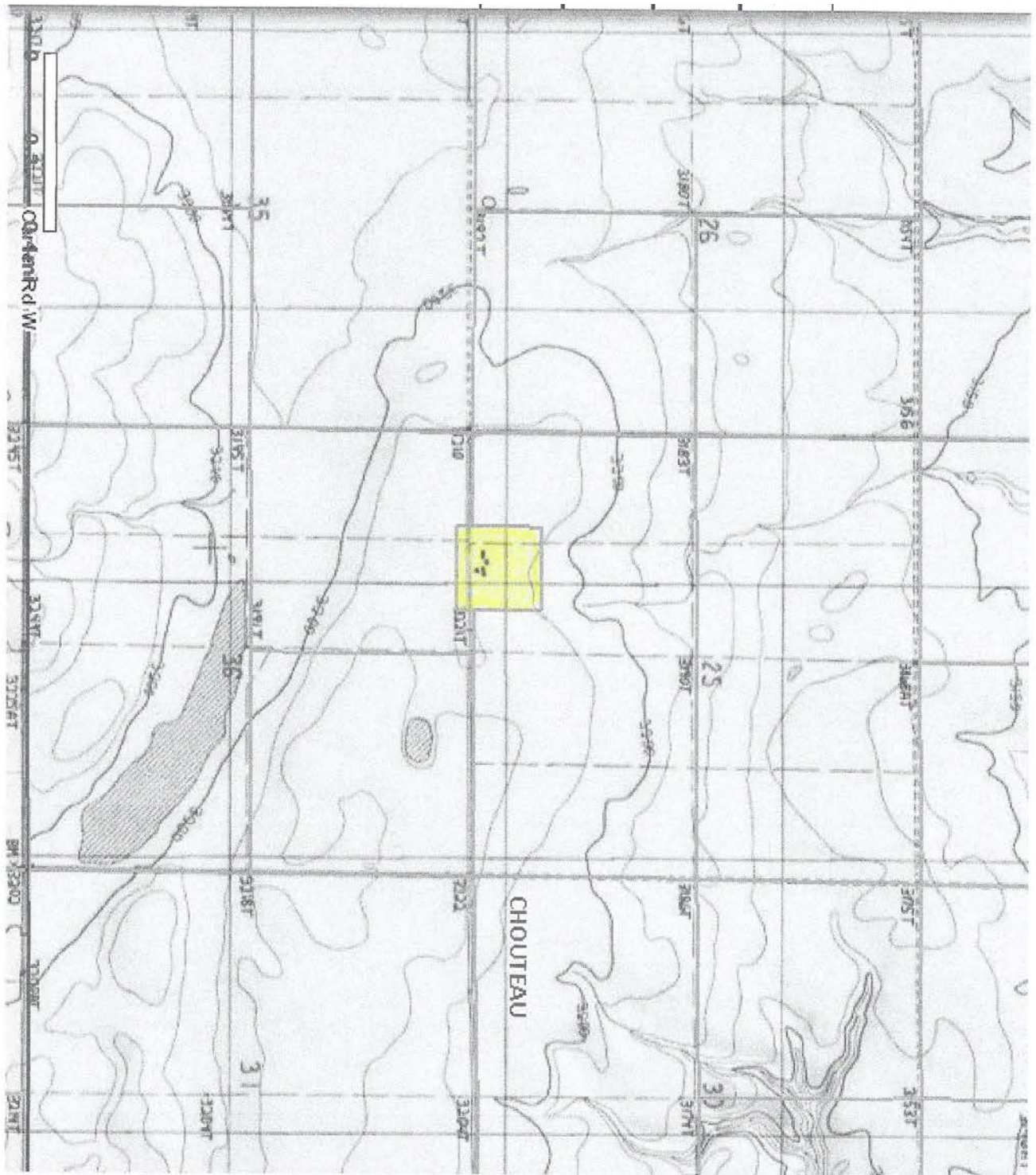


Montana State Library



0 0.2 0.4mi
per Rd/W

CHICOUTEAU



NOTICE: The information contained herein has been supplied by the owner to **NESSAN & ASSOCIATES REALTY** and/or compiled by **NESSAN & ASSOCIATES REALTY** from other sources believed to be reliable. All information contained herein is not guaranteed to be accurate, and the reader of this brochure should independently verify all such information, particularly the number of acres involved, the classifications of those acres, carrying capacity, estimates of production yields, water rights, etc.