

Pryor Creek Property

Highway 418
South of Billings, MT



For additional details, contact:



Tim Nesson
Broker

Member—Nesson & Associates Realty
P.O. Box 51467
Billings, MT 59105

Cell: (406) 860-0791
E-mail: tim@montanafarmranch.com
Website: montanafarmranch.com

Pryor Creek Property

Purchase Price: \$1,500,000



Property Description—MUST SEE!

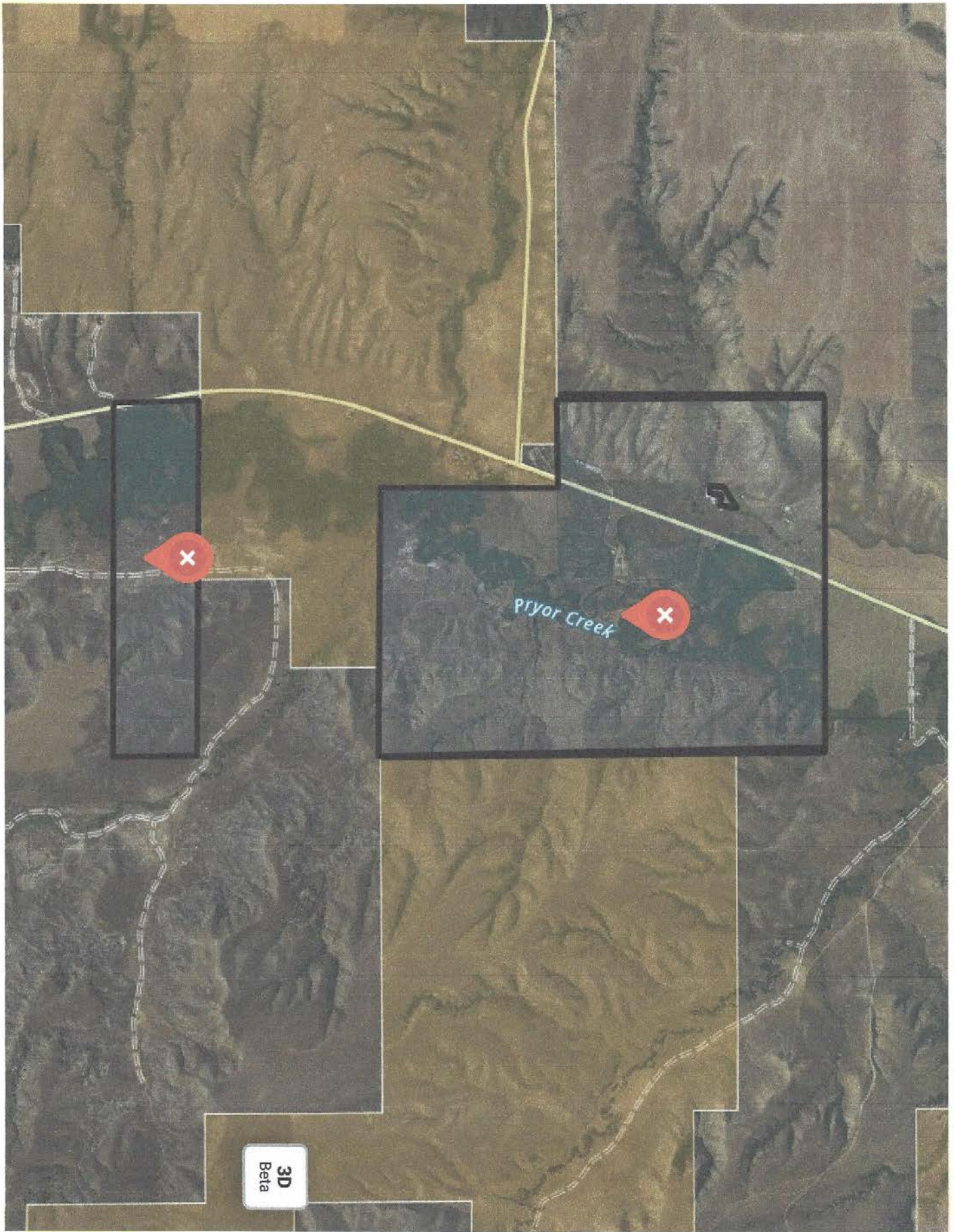
- 877 acres +/- located just South of Billings, MT consisting of two separate tracts, Pryor Creek and Highway 481 dissect both tracts.
 - 134 acres +/- tillable (currently in hay, potential to irrigate may exist)
 - 743 acres +/- grass
- Improvements consist of:
 - 2 homes
 - Built in 1966, 3,752 sq. ft. with a full basement, 4 bedrooms, 2 bathrooms, central heat, green house, detached two car garage
 - Built in 1974, ranch style, 1,144 sq. ft. with a full basement, 3 bedrooms, 1 bathroom, detached two car garage
 - Implement Shed—1,120 sq. ft.
 - Pole Barn—50 x 90 feet=4,500 sq. ft. with stalls inside
 - Small Grain Bin
 - Metal corrals
 - 2 Open Face Sheds
 - 50 x 60 feet=3,000 sq. ft.
 - 12 x 15 feet=180 sq. ft.
 - Shop with two open face stalls, one enclosed
 - 1 water well
- Current year to year lease

Pryor Creek Property

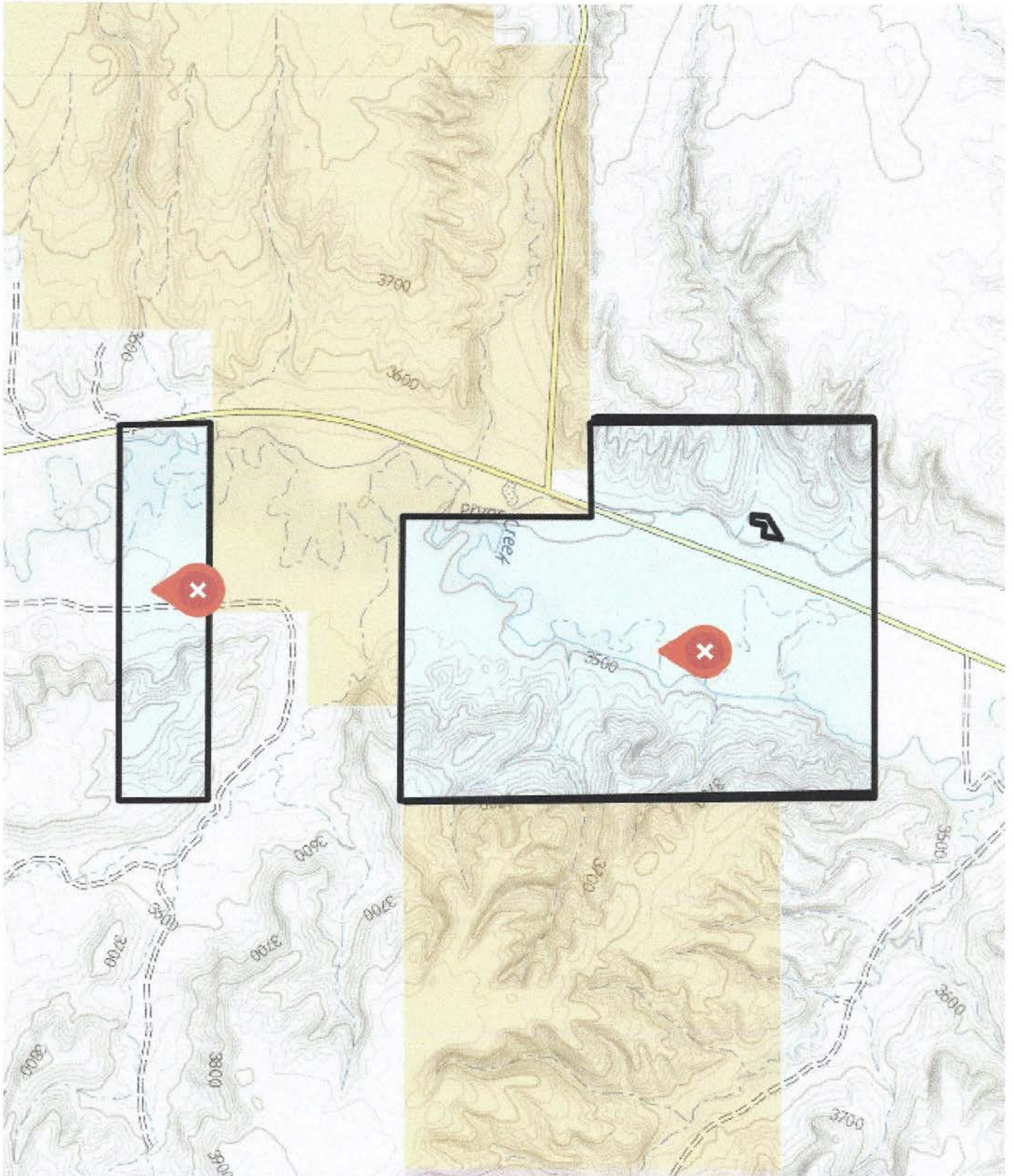
Acres: 877 +/-







3D
Beta



NOTICE: The information contained herein has been supplied by the owner to **NESSAN & ASSOCIATES REALTY** and/or compiled by **NESSAN & ASSOCIATES REALTY** from other sources believed to be reliable. All information contained herein is not guaranteed to be accurate, and the reader of this brochure should independently verify all such information, particularly the number of acres involved, the classifications of those acres, carrying capacity, estimate of production yields,